



Archetypes, Color, and the Domain-Neutral Component

► **Pink:** It's my favorite crayon.

Aerosmith

Black-and-white conveys basic information. Color reaches out and *grabs* you.

Just as the transition from black-and-white photography to color is so profound, the transition from black-and-white modeling to color is an awesome one.

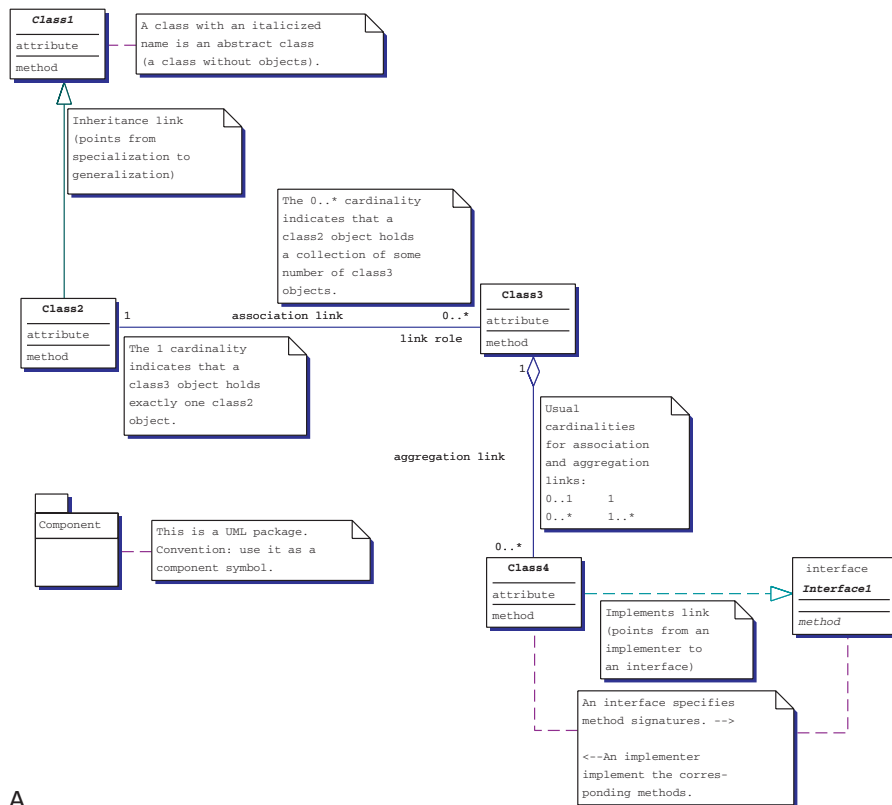
Welcome to the world of modeling in color, with archetypes, a domain-neutral component, and 61 domain-specific components.

In this chapter, you'll learn and apply archetypes, color, and the domain-neutral component. In Chapters 2–5, you'll read and apply a wide variety of domain-specific components. In Chapter 6, you'll discover feature-driven development, the process for putting all of this into best practice.

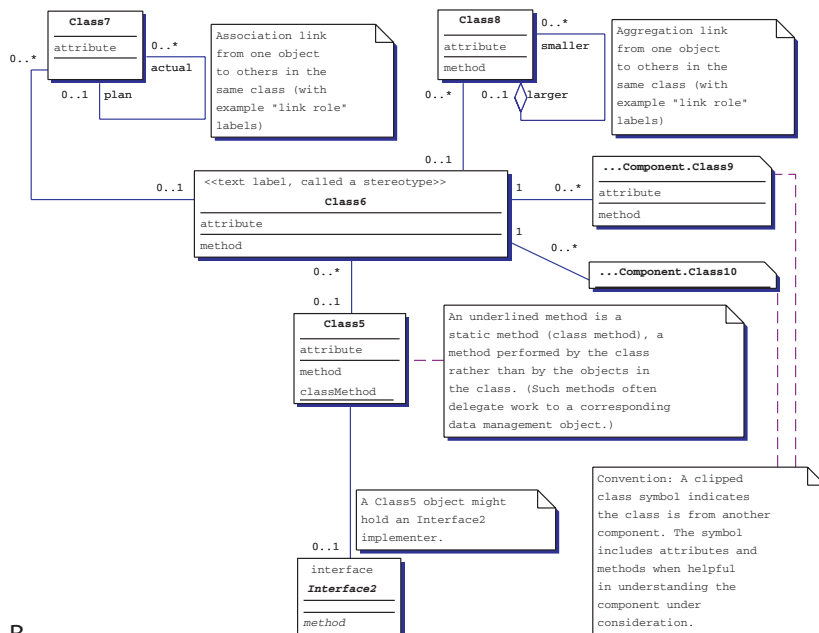
How does Java fit in? Many of the model shapes are Java inspired. You'll find composition rather than inheritance. You'll also see a judicious use of interface plug-in points—for added flexibility. In addition, the CD includes all of the models plus Java skeleton source code, ready for “design by feature, build by feature” expansion, as described in Chapter 6.

We've developed this book as a front-end companion to *Java Design*. That book delivers specific strategies for designing with composition, designing with threads, and designing with notification.

Throughout this book, we use Unified Modeling Language (UML) notation. The class-diagram notation and conventions we use in this book are shown in Figure 1-1. The sequence-diagram notation and conventions we use are shown in Figure 1-2. We suggest you scan those figures now, then refer back to them from time to time.



A.



B.

FIGURE 1-1 ▲ Class-diagram notation and conventions.

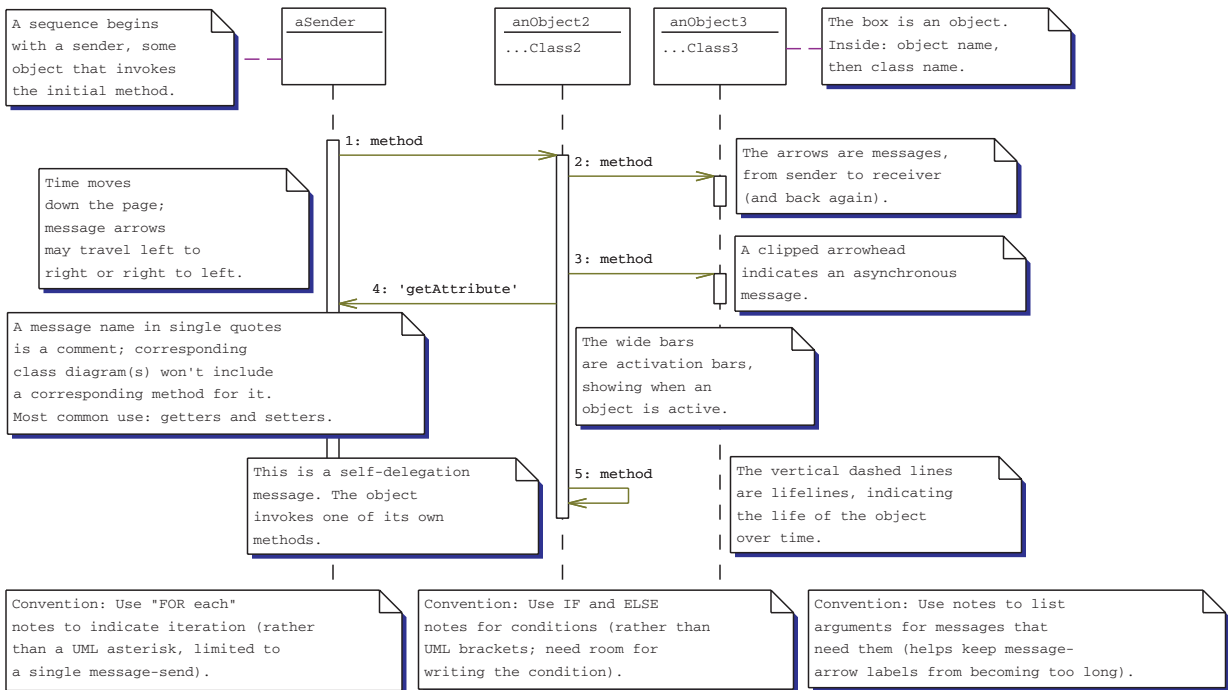


FIGURE 1-2. ▲ Sequence-diagram notation and conventions

1.1 ARCHETYPES

Now let's turn our attention to this chapter's first major topic: archetypes. Here's the concept we want to communicate:

A form or template for one of a small number of class categories. It specifies attributes, links, methods, plug-in points, and interactions that are typical for classes in that category.

Which of the following is the better term for this concept?

Stereotype

1. An unvarying model, as though cast from a mold
2. A text tag for annotating a UML diagram element
3. A broad categorization of classes

Archetype

A form from which all things of the same kind *more or less* follow.

It's a fact. "Archetype" says it best. An archetype is a form from which all classes of the same kind *more or less* follow—including attributes, links, methods, plug-in points, and interactions.¹

Yet which archetypes prove most useful in building better models?

We've developed hundreds of models in dozens of business and engineering domains. Along the way, we continually looked for ways to "abstract up" to a domain-neutral component—a small model of archetypes that we could apply again and again in our workshops and mentoring assignments. Why? We felt we could teach more in less time and accomplish more in less time. Better for our clients, more interesting for us, win-win.

Over time, we've discovered four interconnected archetypes that form a domain-neutral component:

1. The moment-interval archetype
2. The role archetype
3. The "catalog-entry-like description" archetype
4. The "party, place or thing" archetype

We'd like to acknowledge that Peter Coad and Mark Mayfield laid the early groundwork for these four archetypes, first described in [Coad92] and later extended with David North in [Coad95–97].

1.1.1 The Moment-Interval Archetype

The first archetype in importance is a moment in time or an interval of time. It represents something that one needs to work with and track for business or legal reasons, something that occurs at a moment in time or over an interval of time. For short, we call it a "moment-interval" to help remind us that we are looking for either a moment or an interval of importance in the problem domain.

A sale is made at a moment in time—the date and time of that sale.

A rental happens over an interval of time, from checkout to return.

A reservation occurs over an interval of time, from the time that it is made until the time it is used, canceled, or expires.

A sale could even be an interval of time, if you need to track the duration of the sales process itself, perhaps for performance assessment.

What's important is that you recognize it is one of these two, moment or interval, rather than which one of the two it is. So we establish it as one archetype, moment-interval.

¹Archetypes are forms that are *more or less* followed. The "more or less" aspect is essential. In contrast, stereotypes are unvarying. Also in contrast, inheritance and interfaces specify names that must be followed rather than more or less followed.

1.1.1.1 Using Archetypes to Identify Classes and Much More

In any domain, one can look for moment-intervals and begin building a model. In material-resource management, we can move from request to RFQ to PO to delivery to invoice. In manufacturing management, we can move from a planned process and its steps to an actual process and its steps.

So one of the ways that archetypes help in guiding model building is in identifying classes that need to be included in the model.

Yet archetypes are more than simply a categorization of classes. They are also a categorization of the responsibilities (the attributes, links, methods, plug-in points, and interactions) that such classes usually have.

1.1.1.2 Labeling an Archetype

What we need is a text tag, so we can indicate which archetype we are applying when establishing a class. In UML, that text tag is called a stereotype, an extension mechanism within that notation (Figure 1-3).

The problem is that text tags like <<moment-interval>> hide some very important meaning in a rather plain and simple text label. In a family of diagrams, that little label is lost in the noise as it begins to look like all the other labels. And that is too bad; expressing the archetype is far more important than it would be getting credit for. It would be nice if one could give this added layer of information added punch, so it could:

- grab your attention to work on that part of the diagram first,
- help you discover a progression of moment-intervals over time,
- guide you in linking other classes into the moment-interval you are working with, and
- quietly move you to considering what is linked to that moment-interval and how it works with others to get things done.

Expressing archetypes with color is the extra dimension, the added punch that does all that and more.

1.1.1.3 Implementing Archetypes

What does an archetype look like in source code?

An archetype describes a model for classes within that archetype to more or less follow. It's the "more or less" aspect that is important here.

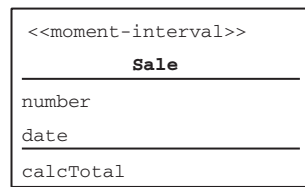


FIGURE 1-3. ▲ Using a UML text tag to indicate a moment-interval.

Could one implement an archetype as a superclass and then inherit from it? No! Here's why: The very nature of an archetype is that each and every class that follows an archetype only more or less follows it. Inheritance is far too rigid for what archetypes are all about, what they need to express.

The other way to implement an archetype is by using a keyword-coded comment, one that modeling tools can recognize and use effectively. In Java, we do this with a javadoc-style comment, using a coded keyword. For example, here's such a comment with an embedded keyword (following the @ symbol):

```
/** @archetype moment-interval*/
public class Sale {
    public BigDecimal calcTotal(){...
    }
    private int number;
    private Date date;
}
```

That gets the job done nicely.

1.1.2 The Role Archetype

The second archetype in importance is a role. A role is a way of participation by a person, place, or thing.

Another way to say this is that a role is a way of participation by a party (person or organization), place, or thing. We like this better, since many times a person or an organization is eligible to play the same role (for example, owner) within a problem domain that we are working in. Often, a moment-interval has parts, called moment-interval details. Think of them as being a little piece of a moment-interval, something it needs to do its job.

So we model the role player (a party, place, or thing) as well as the role (the "hat" that the party, place, or thing is wearing). The role player captures core attributes and behaviors that apply no matter what combination of hats it might be wearing. For person, that often includes attributes like legal name and date of birth. It also includes methods that enforce business rules across the collection of roles being played. For example, a method "authorized for" in a person object interacts with each role; then it applies rules across that collection of roles to determine if a person is authorized to take a given action (Figure 1-4).

Party, person, and organization roles are the norm. Occasionally you'll find place and thing roles too (for example, a product and its two roles, "product in a sales process" and "product in use").

1.1.3 The Description Archetype

The third archetype is a description. More specifically, it's a catalog-entry-like description. It is a collection of values that apply again and again. It

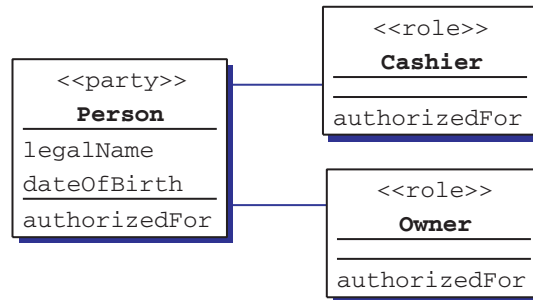


FIGURE 1-4. ▲ A party and its roles.

also provides behavior across the collection of all things that correspond to its description.

For example, your red pickup is a vehicle; it's a thing with its own serial number (called a vehicle identification number), purchase date, color, and odometer reading. The corresponding catalog-entry-like description is vehicle description; it establishes manufacturer, model number, date of manufacture, and available colors; it also is a good place to locate business-related methods like, “how many of these trucks are in good working order?”

1.1.4 The “Party, Place, or Thing” Archetype

A party (meaning a person or an organization), place, or thing is someone or something who plays different roles. A person might be both an employee and a customer. A place might be both a retail outlet and a wholesale outlet. A thing might play one role in a manufacturing process and a different role in a purchasing process.

1.2 COLOR

In September of 1997, we started building models with four colors of Post-it Notes: pink, yellow, green, and blue—one for each archetype. Developers and domain experts new to model building on the team commented a number of times along the way, “But how could you possibly build effective models without color?” That caught our attention! So we developed this technique in practice, published initial findings [Coad97a], and presented this approach in an OOPSLA '97 tutorial [Coad97b].

As is often the case, practice preceded theory. Seeing these ideas work so well in practice, we began investigating color and why it appears to have such a profound effect on building better models.

1.2.1 Why Use Color?

Why use color in component models? Color gives us a way to encode additional layers of information. The wise use of color increases the *amount of content* we can express.

More importantly, one can use color to add layers of new content to models. Those layers are visible from a distance, so that “big picture” model content comes across even before one starts reading the details. We call this effect “spatial layering;” it means that a model is capable of delivering an overview and a detailed view all within itself, without needing to break visual context by jumping to some other representation. Color makes spatial layering possible.

Among the most powerful devices for reducing noise and enriching the content of displays is the technique of layering and separation, visually stratifying various aspects of the data. [He then describes how to do this: use distinctions in shape, lightness, size, and especially color.]

EDWARD R. TUFTE [TUFTE90]

Hence, we can use color to enrich the content of models. In fact, we can apply color to achieve four objectives:

The fundamental uses of color in information design: to label (color as a noun), to measure (color as a quantity), to represent or imitate reality (color as a representation), and to enliven or decorate (color as beauty).

EDWARD R. TUFTE [TUFTE90]

What this means to modeling is that we can use color to:

- label added layers of information (for example, layers of classes with similar characteristics),
- indicate the progression of time (for example, one might use different shades of lightness to show such a progression),
- represent key categories of information within a model, and
- add visual impact to the model.

Added visual impact is important. Modeling is by its very nature a visually oriented activity. Those with strong spatial intelligence are especially drawn to model building and model reading.

Spatial knowledge can serve a variety of scientific ends, a useful tool, an aid to thinking, a way of capturing information, a way of formulating problems, or the very means of solving the problem.

HOWARD GARDNER [GARDNER83]

This ability to idealize results, to see through the mess of real-life observations to what ought to be there, is one of the marks of genius.

ROBERT SCOTT ROOT-BERNSTEIN [ROOT-BERNSTEIN85]

Adding color better engages the spatial intelligence of both model-builders and model-readers alike.

1.2.2 How Many Colors?

We started with four colors. Yet how many colors should we be using?

In visual design, it's a good idea to limit the number of colors in a color scheme. Why? Simply put: it's a good way to increase the likelihood of color harmony within that color scheme.

Two or three colors is usually enough; five is too many. Four-color combinations must be selected with great care: nothing looks worse than too many colors, particularly when they lack common elements.

HIDEAKI CHIJIWA [CHIJIWA87]

To support visual modeling in color, the last thing we want to do is end up with something that is visually distracting. We want to support better design, not distract from it. Hence, no matter how many semantic variations we might come up with, using four colors seems like a good place to start.

1.2.3 Which Colors?

The three-primary system, first proposed around 1731, defines primary colors as red, blue, and yellow. It defines secondary colors as orange, green, and violet.

The perceptual-primary system, first proposed by Leonardo da Vinci, defines primary colors as red, yellow, blue, and green. These are the perceptual primaries, those colors that do not appear to have any other color in them.

The six-primary system, first proposed in the 1990s, gives equal importance to red, yellow, green, blue, orange, and violet. The basis for this system is that blue and yellow don't make green; instead, bits of green impurities within so-called blue paint and so-called yellow paint make green. Hence green (and for that matter orange and violet) deserve to be considered primary colors too [Wilcox94].

We can mute these colors by adding a little white to them. That makes text placed on those colors much easier to read. So, for the four archetypes, we can use pink, pastel yellow, pastel blue, and pastel green. Let's see how!

1.3 THE FOUR ARCHETYPES IN COLOR

Our models always consist of four archetypes: role, moment-interval, thing, and description.

Let's match up archetypes with colors, to deliver that added impact we're looking for.

Moment-intervals tie together a component model. They express the heart and soul of what that component is all about. They usually have parts, called moment-interval details. In a model, moment-intervals often

encapsulate the most interesting methods. Let's make moment-intervals pink, the most attention-grabbing of the colors.

Roles played are next when it comes to interesting responsibilities; we give them the next most attention-grabbing color, yellow. Parties, places, and things are next; we give them the next color in attention-grabbing, green. Descriptions usually have fairly simple responsibilities; we give them the calmest color of the four, blue (see Figure 1-5).

Each of these four colors corresponds to an archetype's characteristics: the attributes, links, methods, plug-in points, and interactions that corresponding classes more or less follow.

An archetype's characteristics include attributes and links as shown in Figure 1-6. A blue description knows its type, description, item number, and default value(s). A green party, place, or thing knows its serial number, name, address, and custom value(s). A yellow role knows its assigned number and status. A pink moment-interval knows its number, date (or date-time or interval), its priority, its total, and its status. A pink moment-interval detail knows its quantity.

Note the links, from blue to green to yellow to pink. In addition, usually, a pink moment-interval links to little pink moment-interval details. And sometimes a pink moment-interval links to planned or actual pink moment-interval(s).

You can tailor each blue-green-yellow-pink sequence you work with, customizing according to the level of specificity you need. Here's how. Include blue if you have groupings of values that apply again and again. Include green if you must track parties, places, or things individually

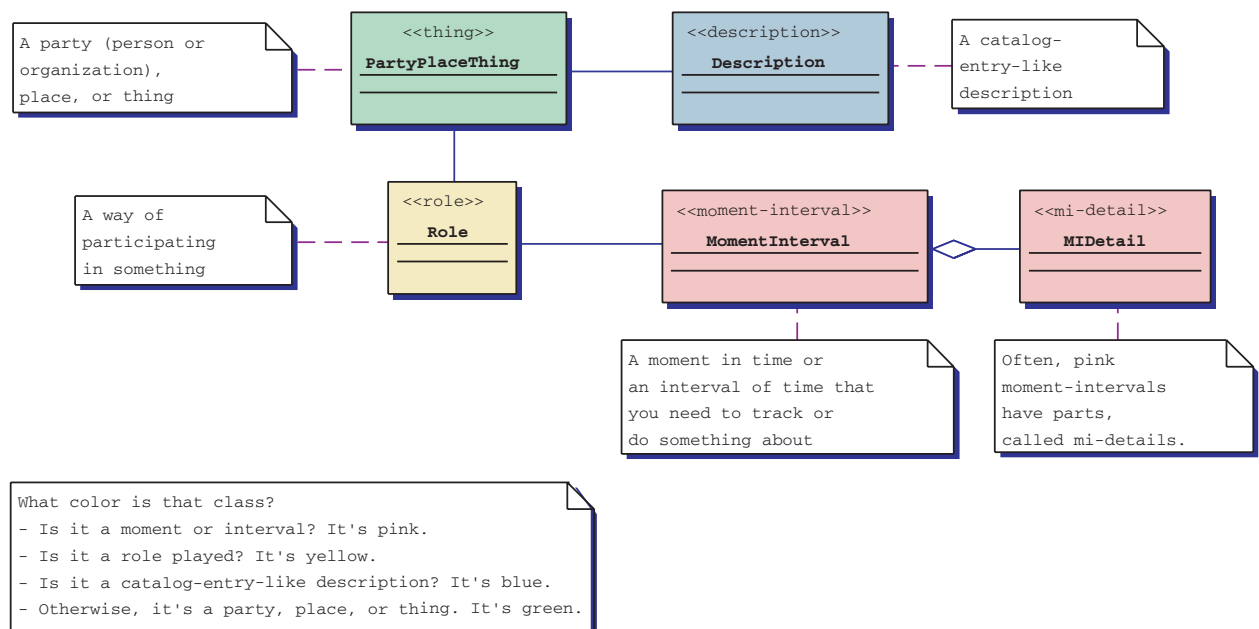


FIGURE 1-5. ▲ The four archetypes and their colors.

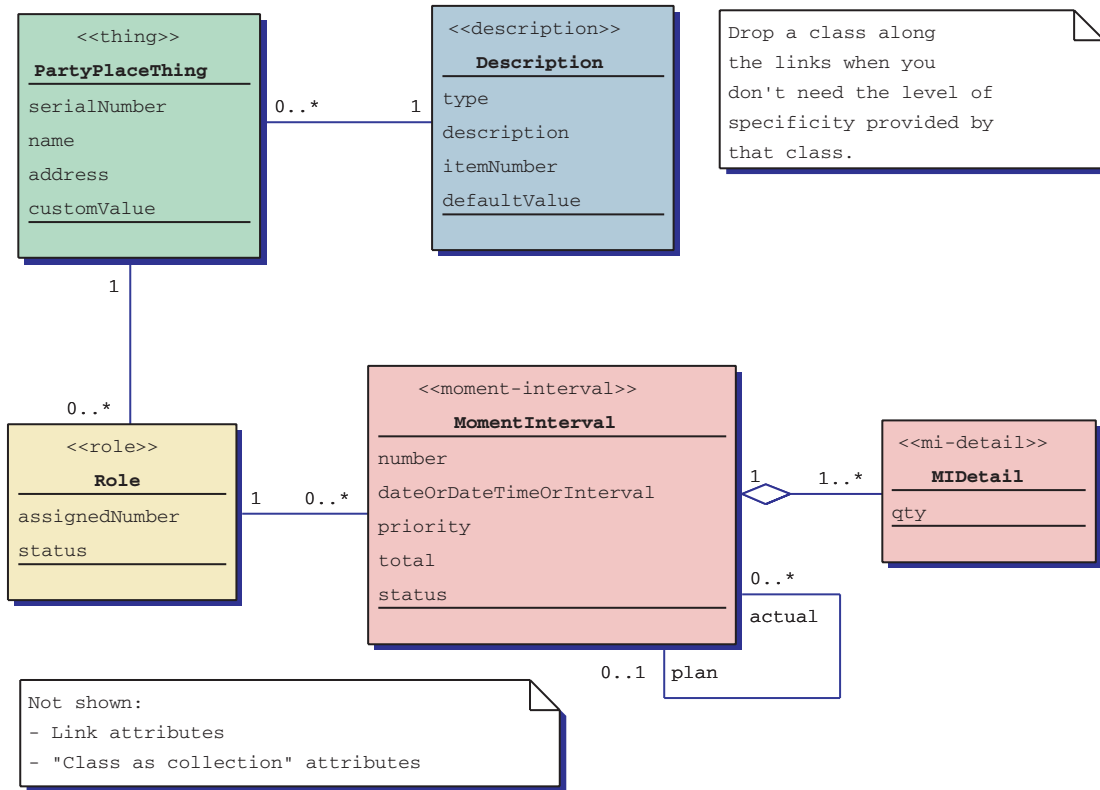


FIGURE 1-6. ▲ Archetypes—and their attributes and links.

rather than by quantity. Include yellow if you have role-specific responsibilities. Include pink if you need to remember the corresponding moment in time or interval of time.

An archetype’s characteristics include methods (Figure 1-7). A blue description assesses across its corresponding green parties, places, or things; finds available; calculates quantity available; calculates total for a detail (with quantity and unit of measure); and lists its corresponding parties, places, or things. It also has static class-level methods (underlined, with behavior across all the objects in the class) to list all descriptions and to assess across all descriptions.

A green party, place, or thing assesses across its corresponding yellow roles; gets its custom value or, if not present, asks its corresponding blue description for its default value and returns it as its own; and lists its associated roles. Class-level methods list and assess across all parties, places, or things in the class.

A yellow role assesses across and lists its corresponding pink moment-intervals. At the class level, it lists all roles and assesses across all objects in the class.

A pink moment-interval makes one (supports the business process for making one, that is), adds details (parts), and calculates its total (interacting with its parts to do so). It can also recalculate its total (forcing a

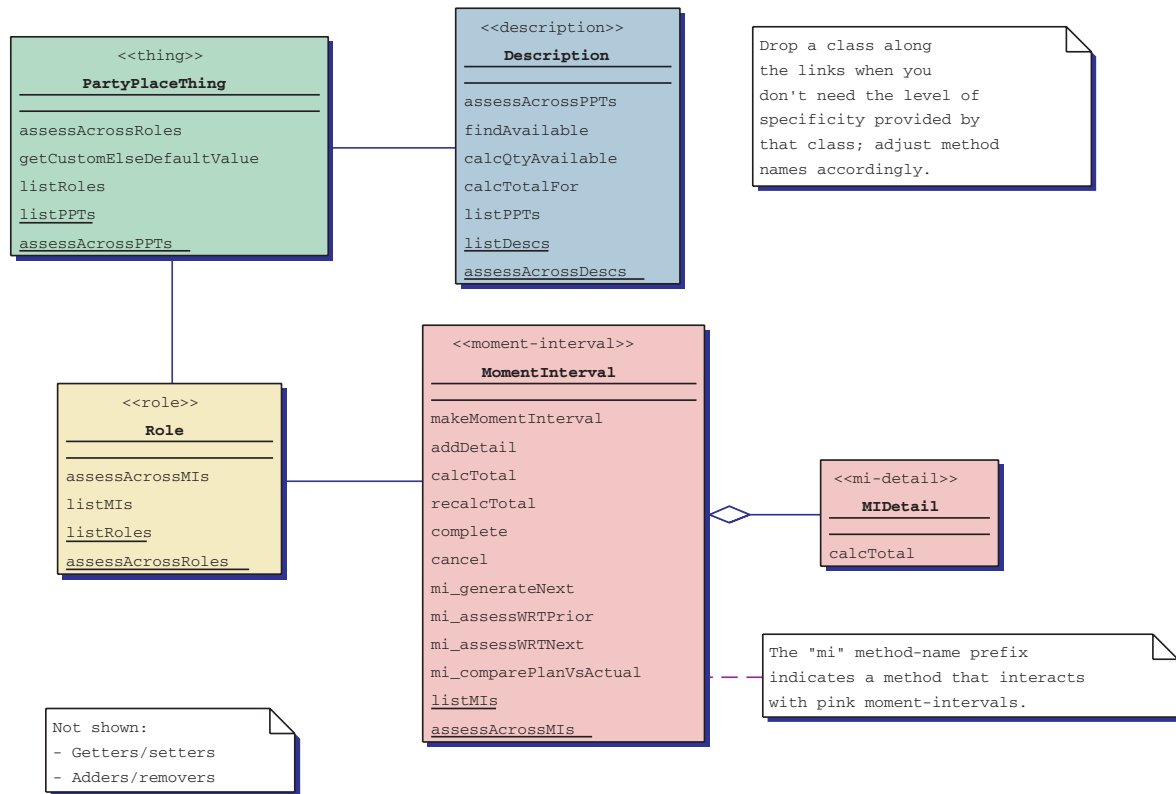


FIGURE 1-7. ▲ Archetypes and their methods.

recalculation, regardless of any internally buffered value). It accepts messages asking it to complete or cancel the moment-interval. It also provides behavior across other pink moment-intervals (designated by the prefix “mi_”): generate next, assess with respect to prior moment-intervals, assess with respect to next moment-intervals, and compare plan vs. actual. It also has two class-level methods: list all and assess across all. And each pink moment-interval detail calculates its total.

Note that we tend to list method names this way:

1. Make—the business-process method for a pink moment-interval
2. Calculate, assess, and the like
3. List
4. Moment-interval (“mi”) methods (when a pink interacts with other pinks)
5. Class (static) methods, ones that apply across all of the objects in a class (such methods are underlined)

An archetype’s characteristics include plug-in points for adapting the behavior of an archetype (Figure 1-8). A blue description needs a plug-in point when it has algorithmically complex behavior and we want the option

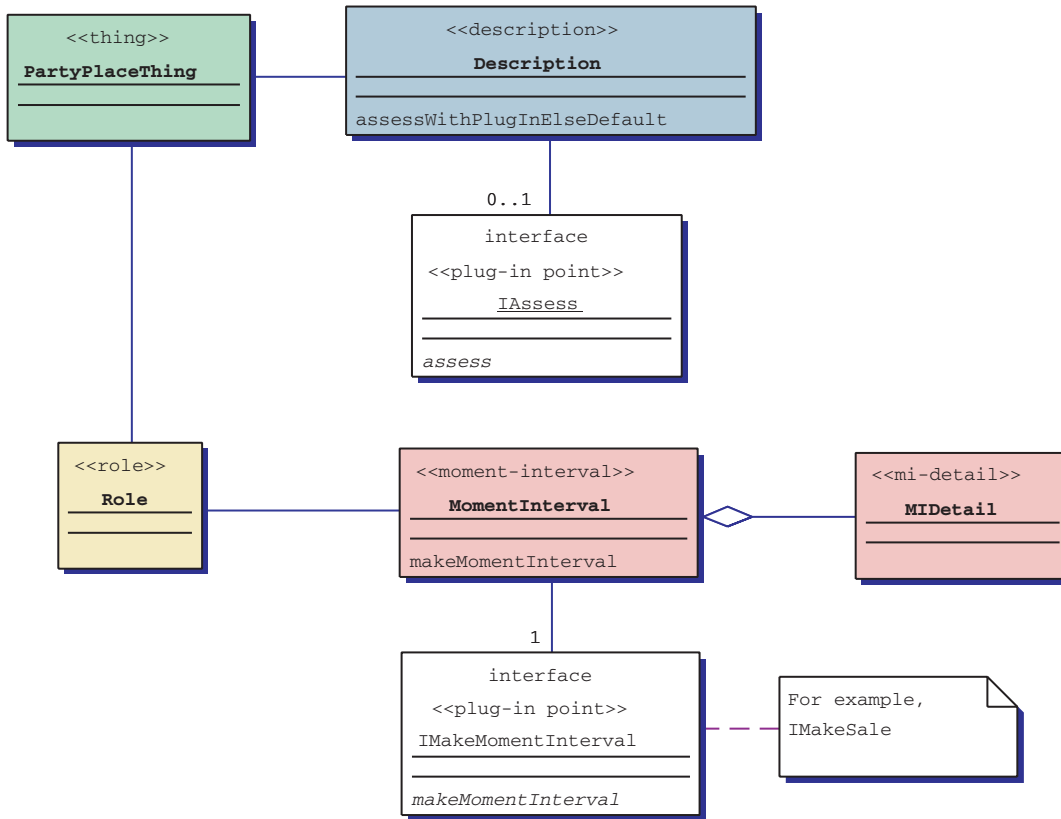


FIGURE 1-8. ▲ Archetypes and their plug-in points.

of plugging in an alternative behavior at times (IAssess, for example, ICalcInterest). A pink moment-interval needs a plug-in point whenever the business process is complicated enough that we really should design in plug-in flexibility to accommodate (anticipated or unanticipated) business process change over time (IMakeMomentInterval, for example, IMakeSale with a “one click” or a “shopping cart” plug-in).

Figure 1-9 summarizes the attributes, links, methods, and plug-in points of archetypes. We add interactions later in this chapter.

1.4 GIVEN A CLASS, WHAT'S THE COLOR, WHAT'S THE ARCHETYPE?

So given a class, what archetype or color should you use? Use this checklist:

1. Is it a moment in time or an interval of time, something the system needs to track for business or for legal reasons? If so, it's a pink moment-interval.
2. Otherwise, is it a role? If so, it's a yellow role.

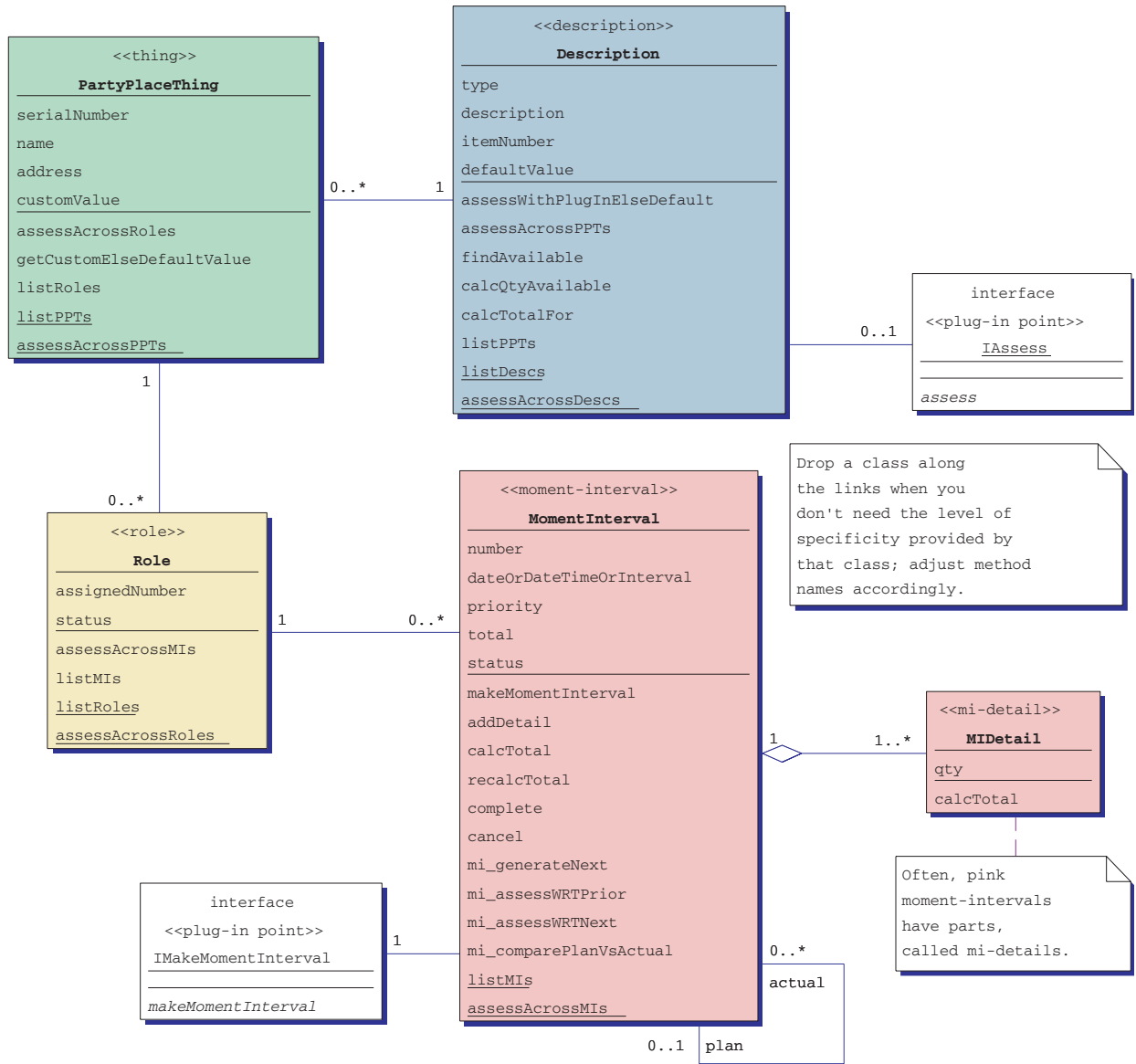


FIGURE 1-9. ▲ Archetypes and their attributes, links, methods, and plug-in points.

3. Otherwise, is it a catalog-like description, a grouping of values that you can apply again and again? If so, it's a blue description.
4. Otherwise, it's a party, place, or thing. It's a green party, place, or thing (green is the default; if not pink, yellow, or blue, it's green).

We also use white occasionally, for notes, for plug-in points, and for system-interaction proxies.

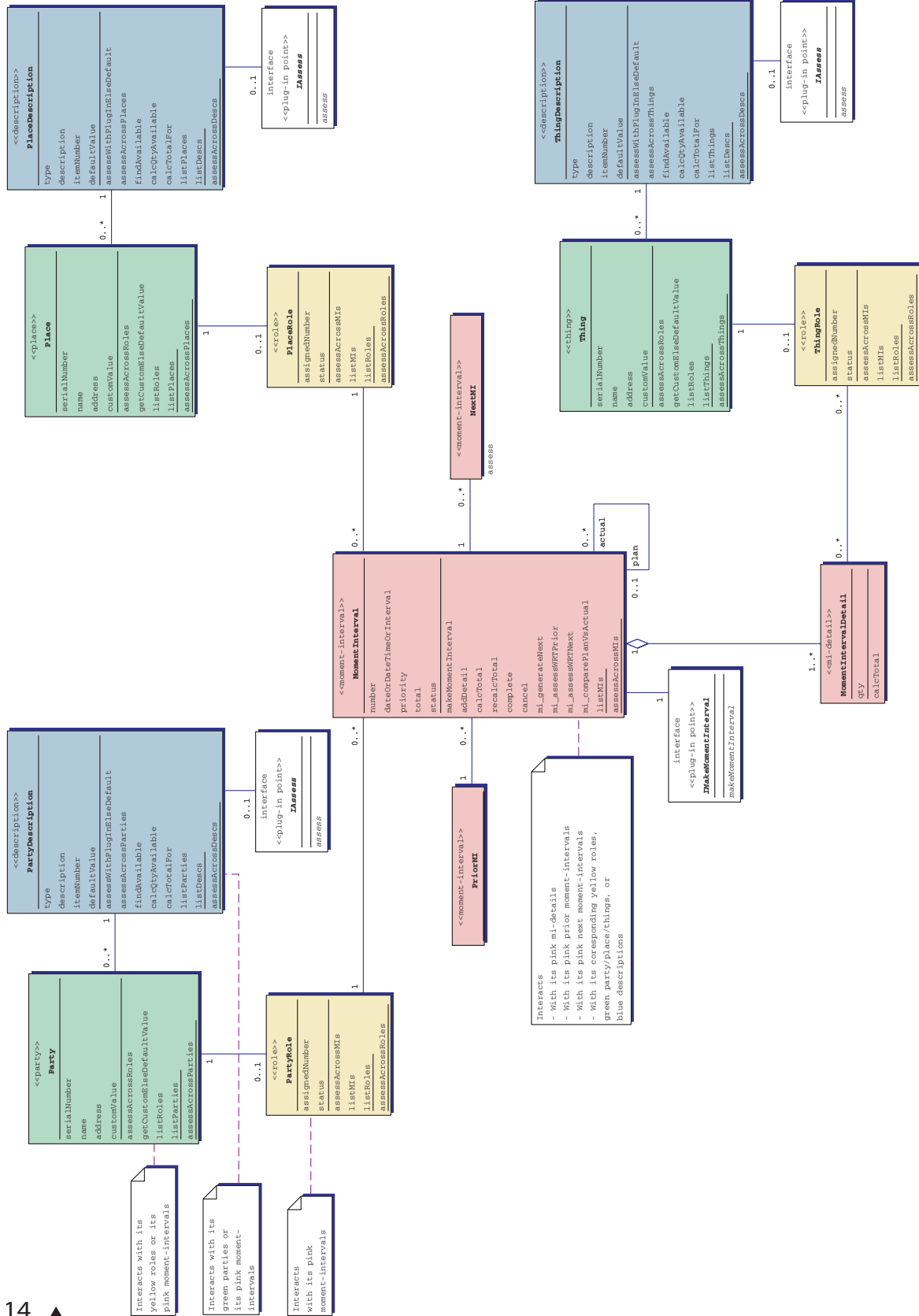


FIGURE 1-10. ▲ The domain-neutral component.

1.5 THE DOMAIN-NEUTRAL COMPONENT

Archetypes in color are very useful little building blocks.

Let's take them a step further.

These four archetypes in color plug into each other in a very repeatable and predictable way. We call it a "domain-neutral component."

We've built hundreds and hundreds of models. All of them follow this domain-neutral component model. In Chapters 2–5, you'll find 61 domain-specific components. All of them follow the domain-neutral component shown in Figure 1-10.

1.6 INTERACTIONS WITHIN THE DOMAIN-NEUTRAL COMPONENT

This section focuses on archetype interactions within the domain-neutral component.

Some refer to class diagrams as static and sequence diagrams as dynamic. Actually, neither diagram moves! It takes some imagination, some additional internal visualization, to see the motion.

Class diagrams are *implicitly* dynamic. (It takes a bit of imagination to see the interactions, although one really can learn to see them!) Sequence diagrams are *explicitly* dynamic (well, as good as it gets without having on-screen simulations in front of you).

Archetypes include typical interactions too. Once you know those interactions, even class diagrams spring to life.

Now rest assured, this is not an excuse for not including sequence diagrams in this book! Actually, you will find an equal balance of sequence diagrams and class diagrams in here.

We feel compelled to make this added point though, that with archetype interactions you really *can* learn to look at a class diagram and visualize its most important interactions.

So let's look at how to do this. First, we'll visualize an association in three-dimensions. Then, we'll visualize message-sends within that new dimension. And finally, we'll walk through a series of class diagram and sequence diagram pairs, so you can begin to visualize those interactions for yourself.

Here we go.

Consider an association with a "0..*" marking on one end (Figure 1-11).

Already, the class diagram is asking us to visualize beyond what it explicitly represents. An object on the left side links to some number of objects on the right side. Visually, you can translate it to something like Figure 1-12.

Again, the class diagram is asking us to see beyond what is explicitly represented. The object on the left interacts with the objects on the right,

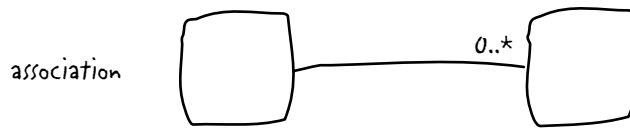


FIGURE 1-11. ▲ An association link.

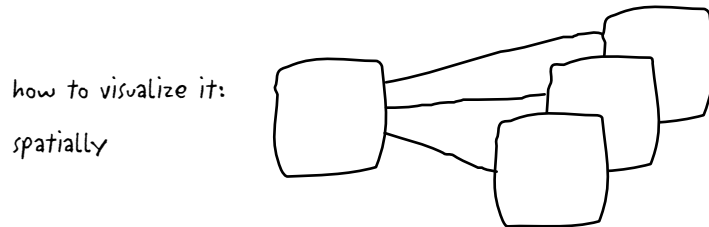


FIGURE 1-12. ▲ How to visualize that link, spatially.

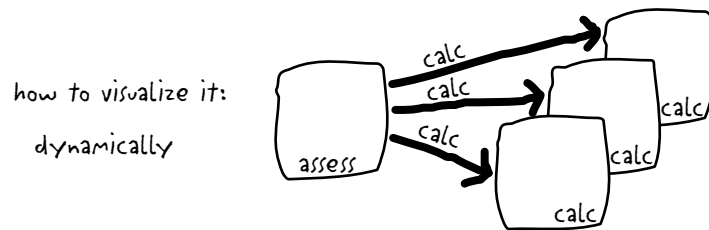


FIGURE 1-13. ▲ How to visualize that link, dynamically.

by sending messages to each one. Figure 1-13 shows how to visualize the implicit dynamics of an association link.

Thankfully, sequence diagrams are explicitly dynamic, giving added visual clues about the sequence of interactions and message sends inherent within a class diagram.

Here are the archetypal interactions for the domain-neutral component—and indeed the archetypal interactions for all components in this book (Figures 1-14 to 1-19).

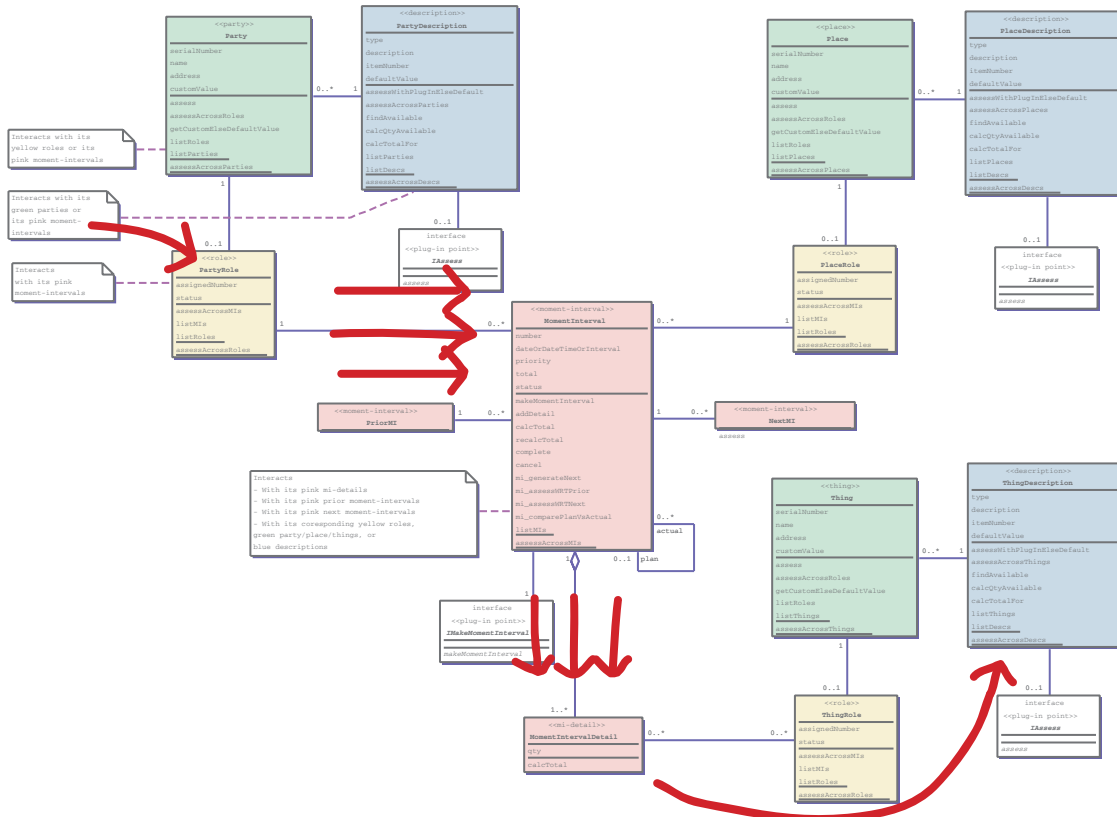


FIGURE 1-14A. ▲ Assess value to business: implicit dynamics.

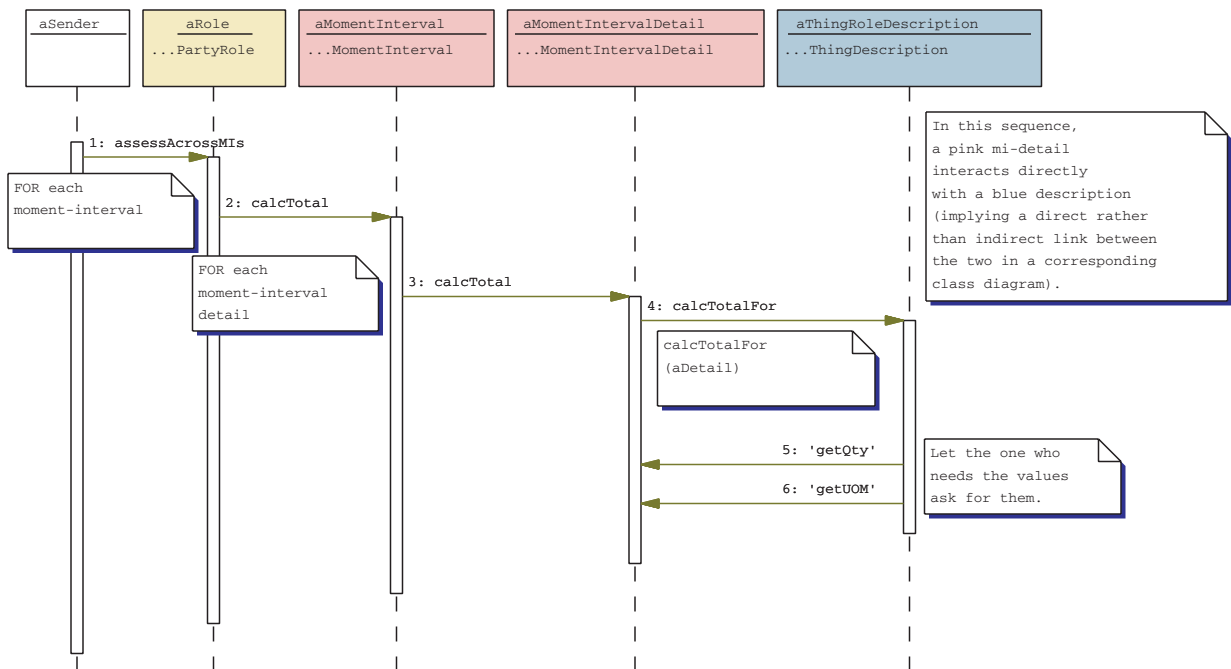


FIGURE 1-14B. ▲ Assess value to business: explicit dynamics.

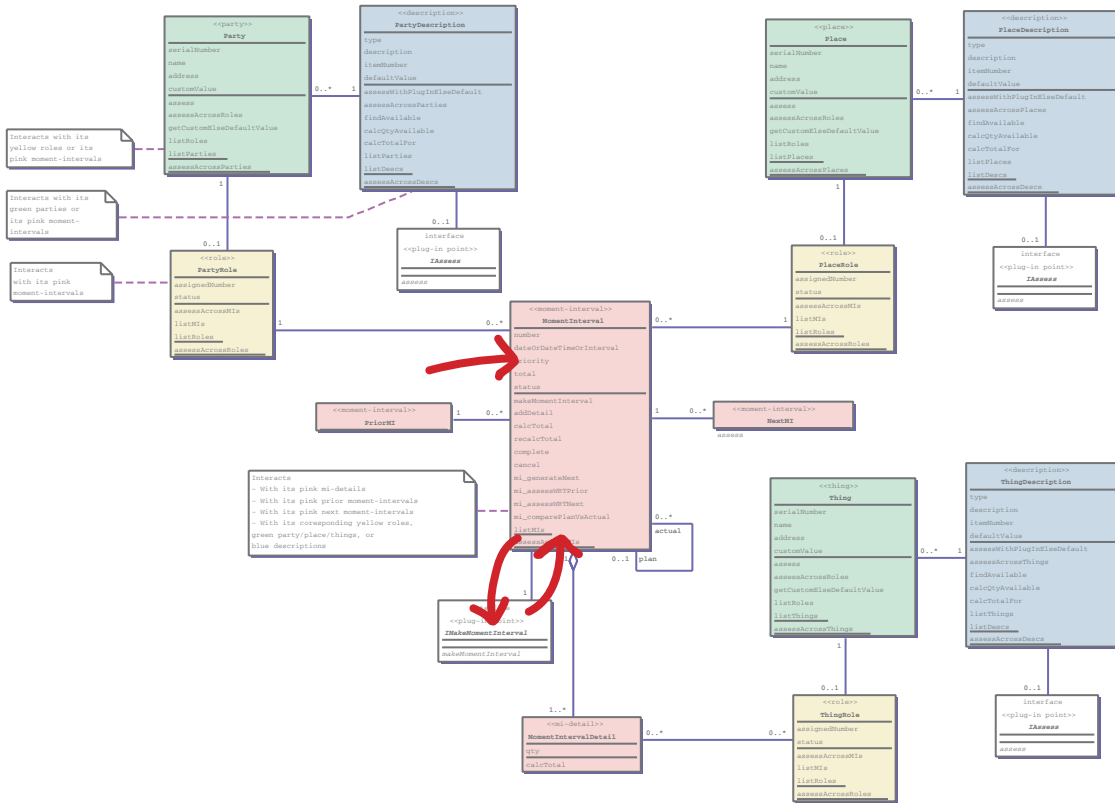


FIGURE 1-15A. ▲ Make moment-interval: implicit dynamics.

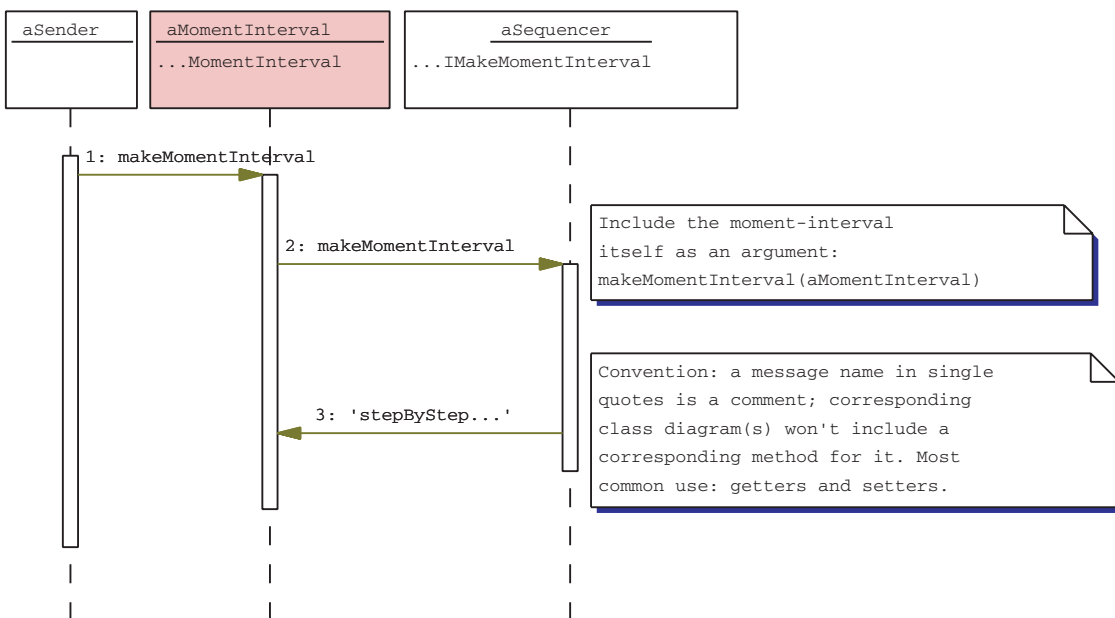


FIGURE 1-15B. ▲ Make moment-interval: explicit dynamics.

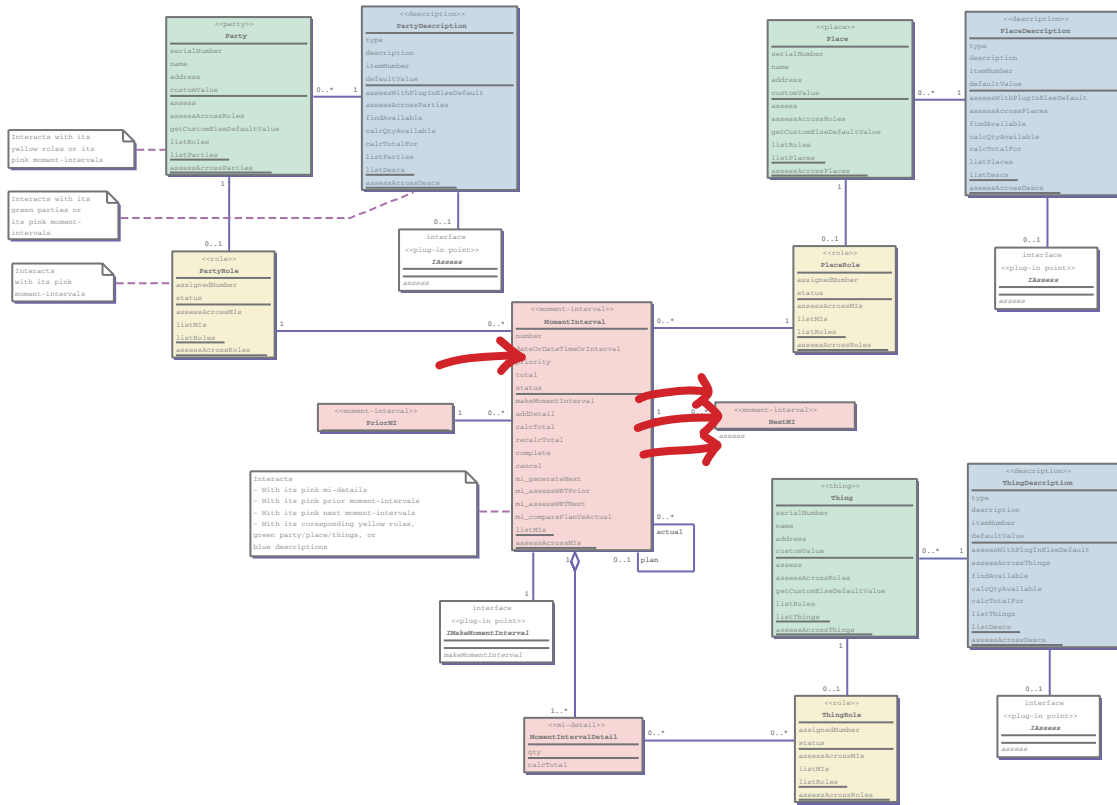


FIGURE 1-16A. ▲ Assess with respect to a subsequent moment-interval: implicit dynamics.

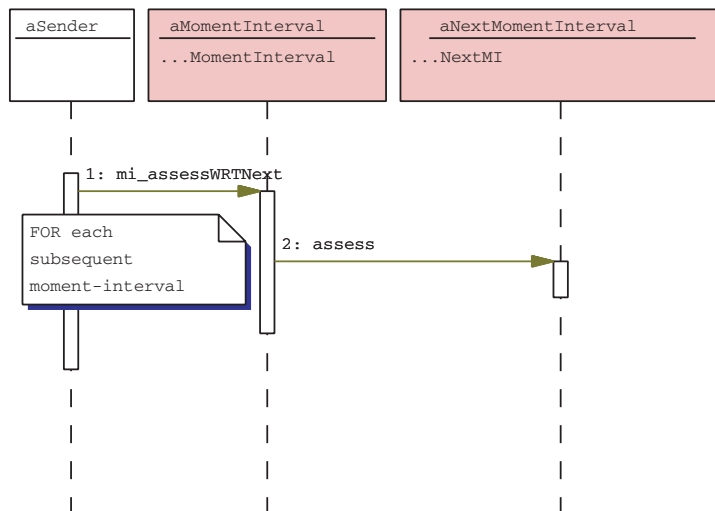


FIGURE 1-16B. ▲ Assess with respect to a subsequent moment-interval: explicit dynamics.

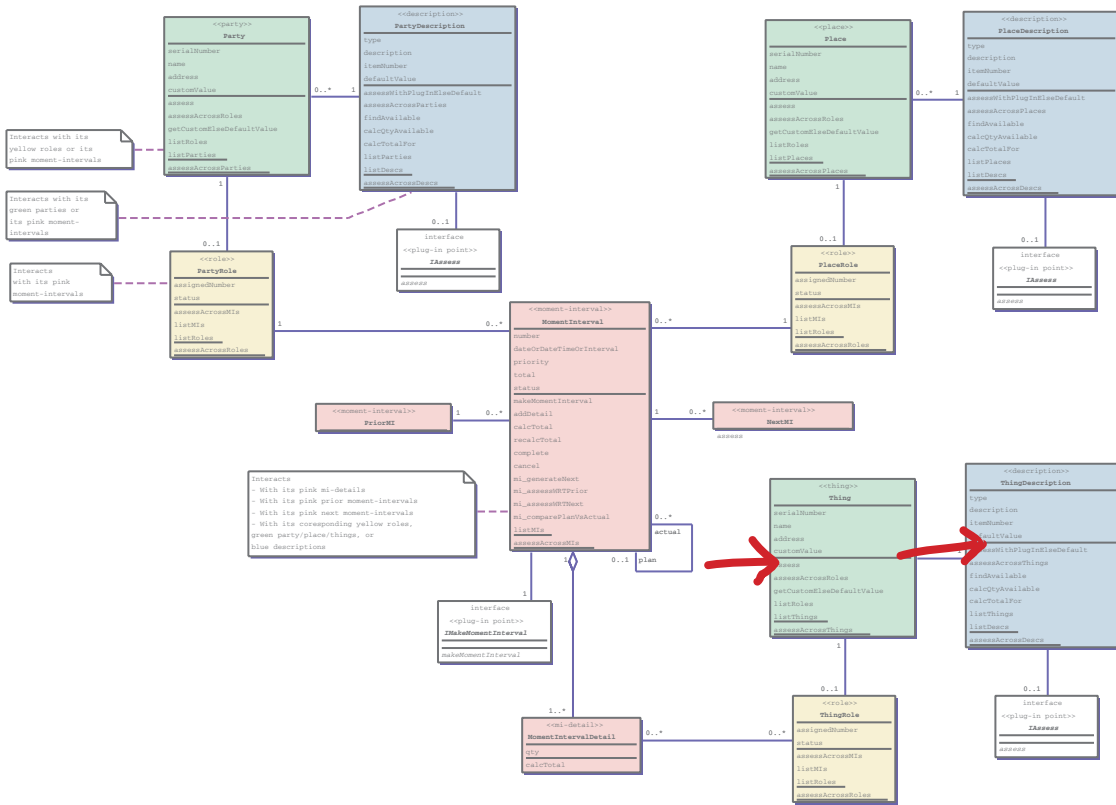


FIGURE 1-17A. ▲ Get custom else default: implicit dynamics.

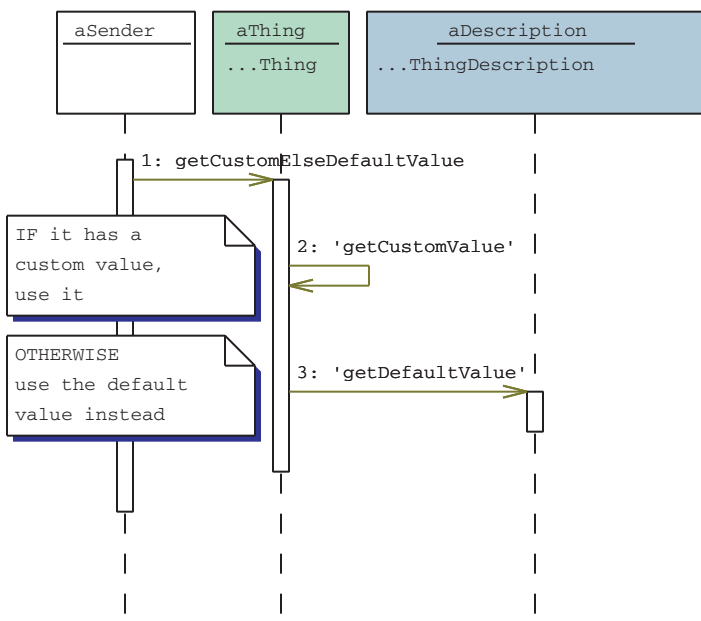


FIGURE 1-17B. ▲ Get custom else default: explicit dynamics.

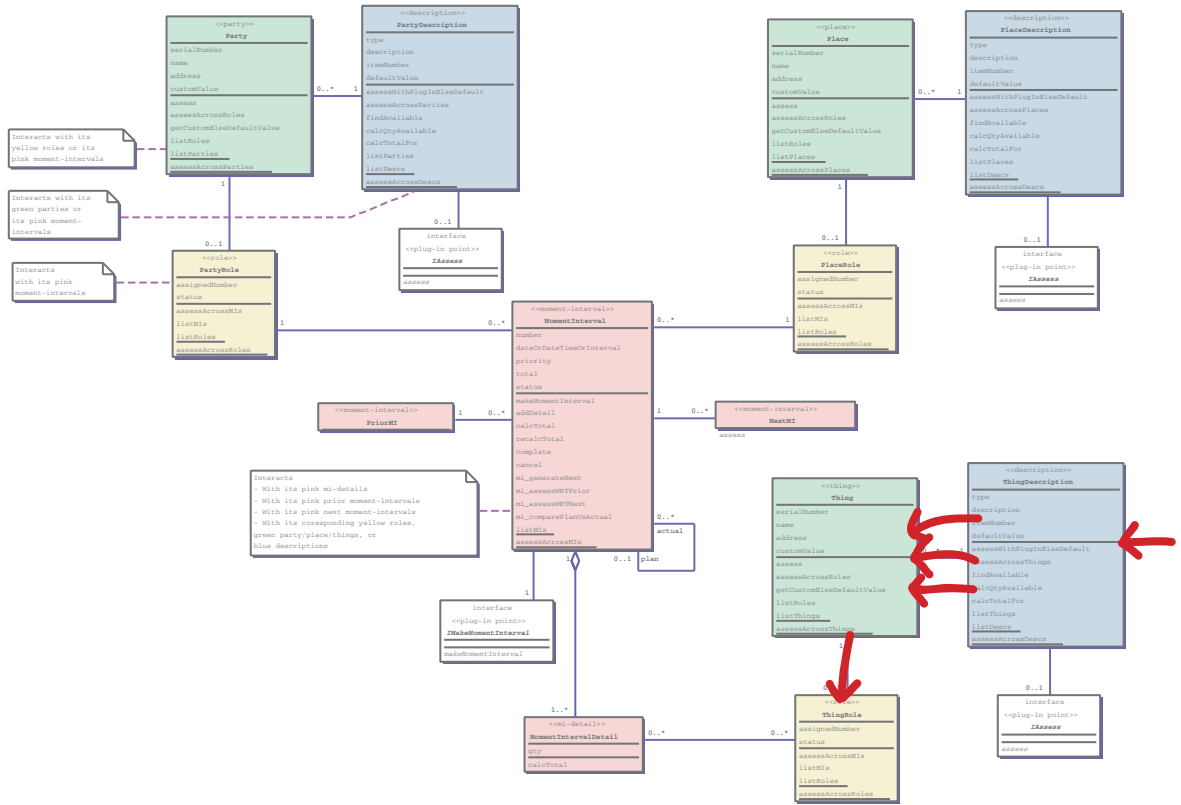


FIGURE 1-18A. ▲ Find available: implicit dynamics.

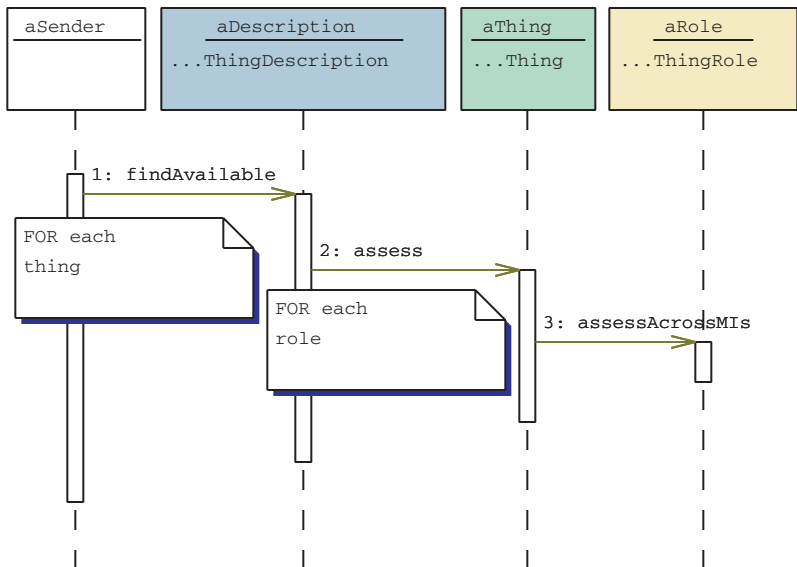


FIGURE 1-18B. ▲ Find available: explicit dynamics.

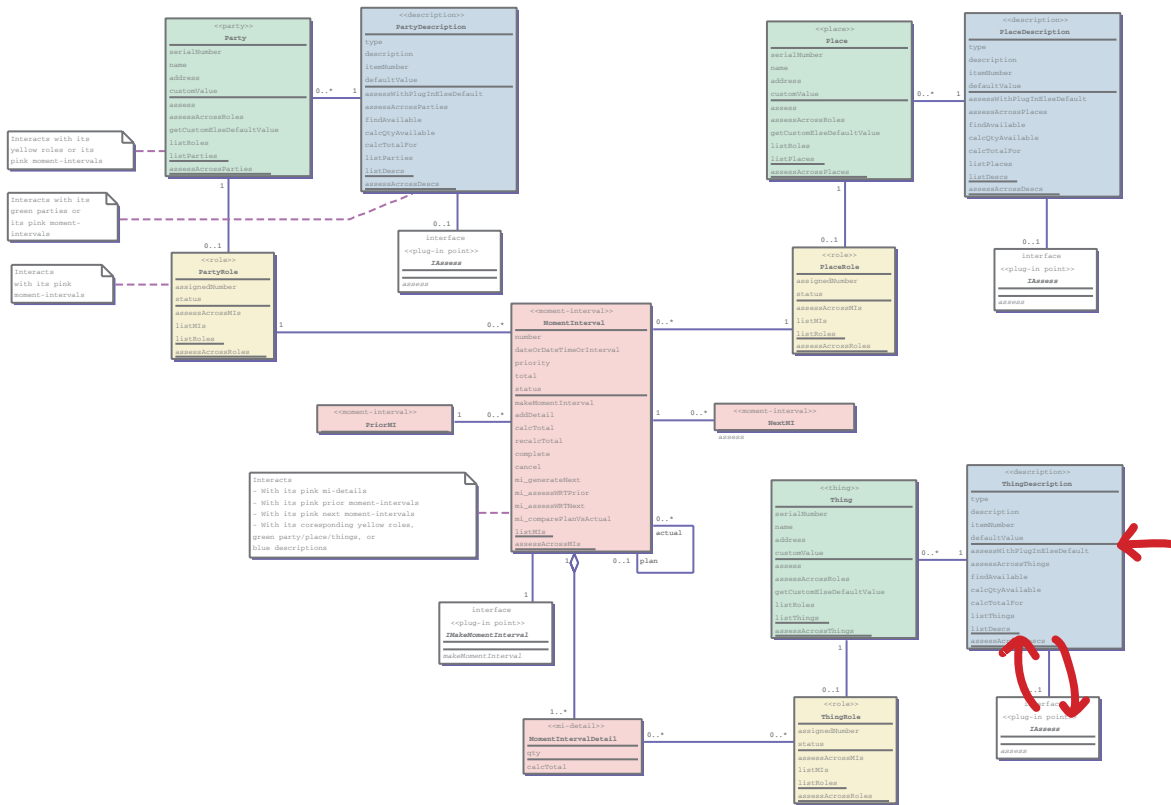


FIGURE 1-19A. ▲ Invoke plug-in else default: implicit dynamics.

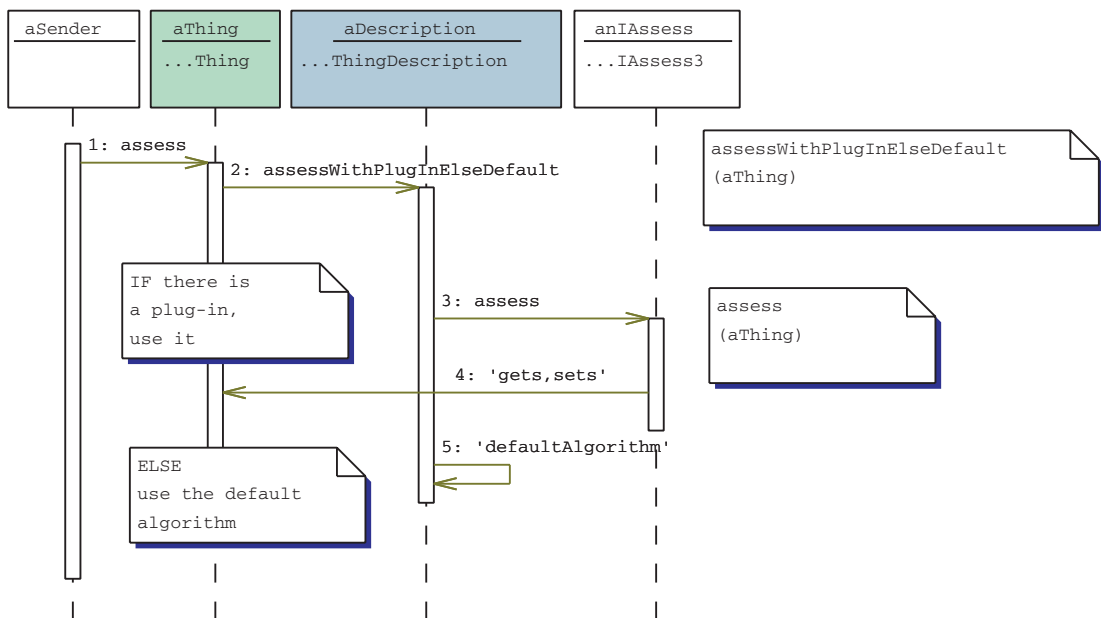


FIGURE 1-19B. ▲ Invoke plug-in else default: explicit dynamics.

1.7 COMPONENT CONNECTIVITY

On printed circuit boards, some components directly connect (that is to say, they are hardwired). Other components plug in. Why not make every element something you can plug in? Sockets everywhere! Well, the reason is that it's simply not cost-effective to do so with printed circuit board design.

The same is true with software components. Some are hardwired, some are plug-in. Although we could have plug-in points everywhere, it's not cost-effective to do so. So we choose and design in plug-in points at those places where we need—and can afford to implement—added flexibility.

The rest of this section moves into a deeper level of detail regarding component connectivity. If you are new to these component concepts, you might wish to skip this for now and come back to it at another time. Yet for those with inquiring minds that want to know, here are the details behind component connectivity.

A “direct connect” links an object in one component with objects in another component (Figure 1-20).

A product-sale object holds a collection of some number of shipments. And a shipment holds a collection of some number of product sales.

We can ask a product sale to assess the timeliness of its shipments; it interacts directly with its shipment objects (Figure 1-21).

And we can ask a shipment if it was shipped before the due dates for its corresponding product sales; it interacts directly with its product-sale objects (Figure 1-22).

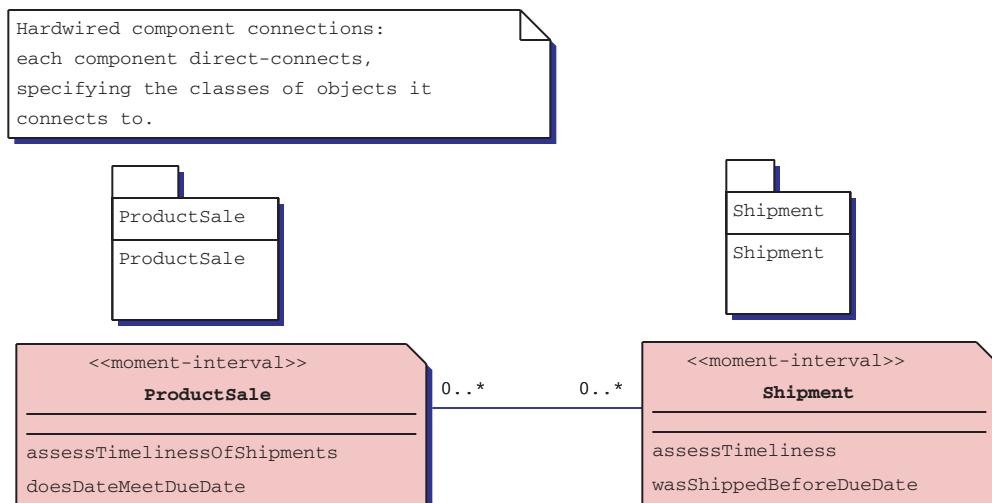


FIGURE 1-20. ▲ Direct connectivity.

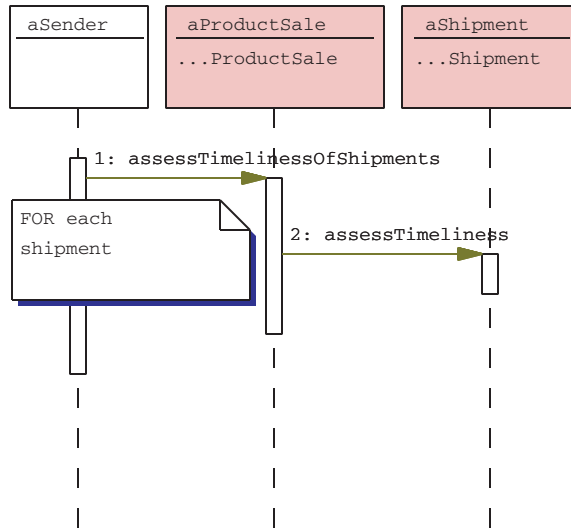


FIGURE 1-21. ▲ Direct connectivity: A product sale interacts with its shipments.

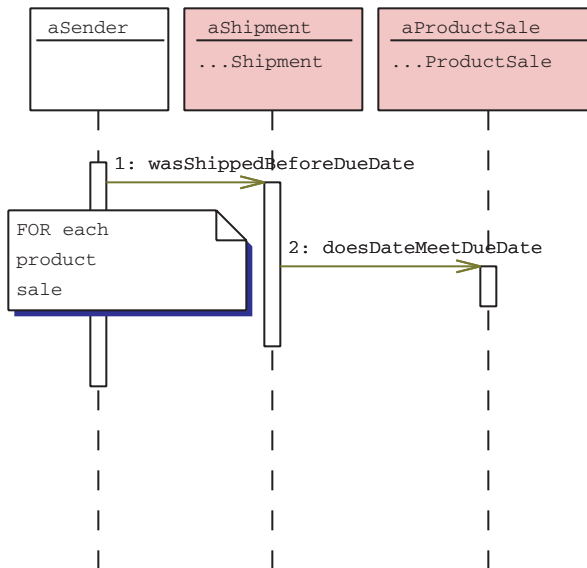


FIGURE 1-22. ▲ Direct connectivity: A shipment interacts with its product sales.

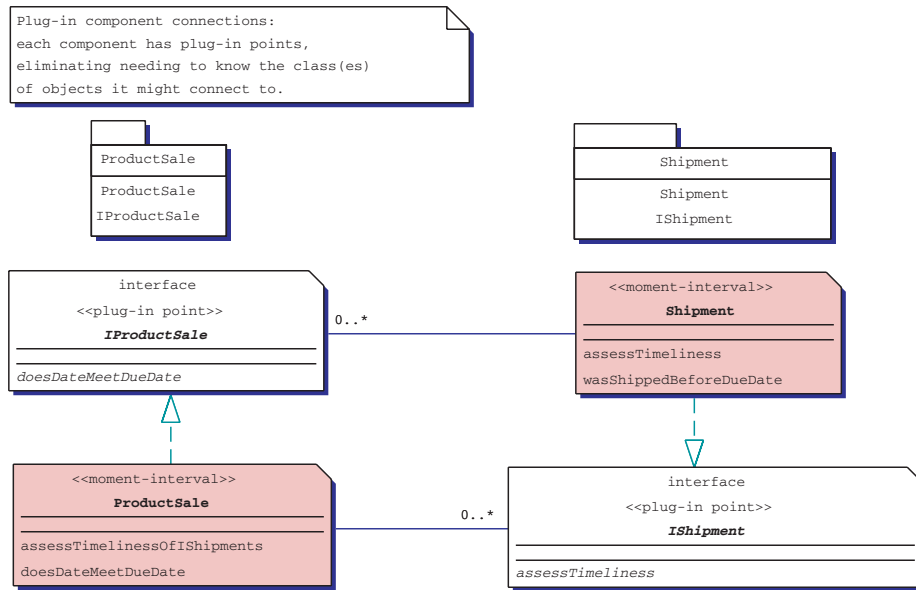


FIGURE 1-23. ▲ Plug-in connectivity.

Now consider plug-in connectivity. An object interacts with whatever is plugged into a plug-in point (Figure 1-23).

A product sale holds a collection of objects from classes that implement the `IShipment` interface. A shipment holds a collection of objects from classes that implement the `IProductSale` interface. It really does not matter which classes the connecting objects are in, only that the interface must be implemented.

We can ask a product sale to assess the timeliness of its shipments; it interacts with its `IShipment` implementers, whatever is plugged into that plug-in point (Figure 1-24).

And we can ask a shipment if it was shipped before the due dates for its corresponding product sales; it interacts with its `IProductSale` implementers, whatever is plugged into that plug-in point (Figure 1-25).

For modeling simplicity, we build models with direct connections. Then we choose where we want flexibility and add plug-in connectivity (like deciding where we want sockets on a circuit board; it's a decision in adding flexibility).

1.8 TWELVE COMPOUND COMPONENTS

What if you had a substantial collection of enterprise-component models? Each component would establish a fundamental model shape, the most common responsibilities for the classes and interfaces, and the plug-in points for extending capabilities. Each component would give your modeling team something more than a blank whiteboard for getting started in building a model for your application or family of applications.

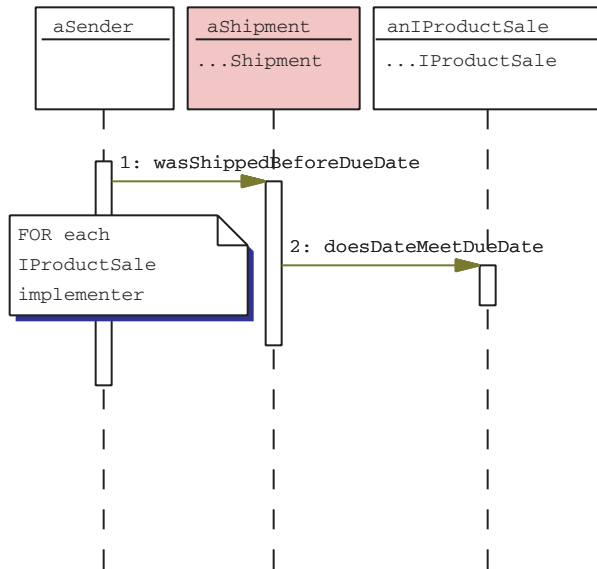


FIGURE 1-24. ▲ Plug-in connectivity: A product sale and its shipments.

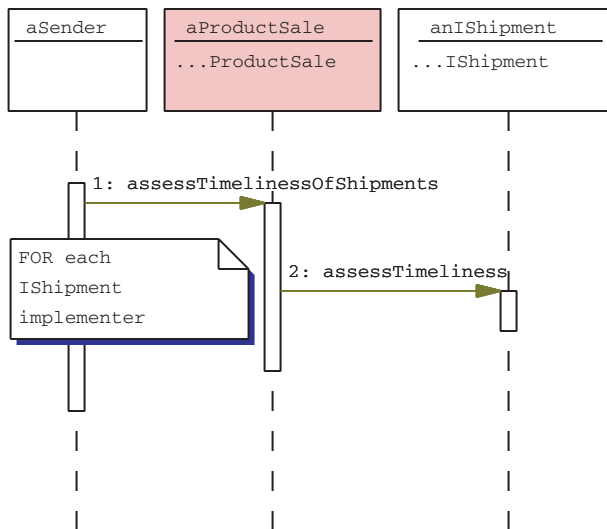


FIGURE 1-25. ▲ Plug-in connectivity: A shipment and its product sales.

This book delivers a collection of 61 enterprise components. These components are ready to use and reuse as you see fit. You can put them to work in a number of ways, for example:

- Use as-is.
- Extend a component by plugging in new capabilities at the plug-in points.
- Extend by adding additional content.
- Use as a cross-check, an outside opinion, one that you can compare and contrast with your own ongoing work.

The twelve compound components are shown in Figure 1-26.

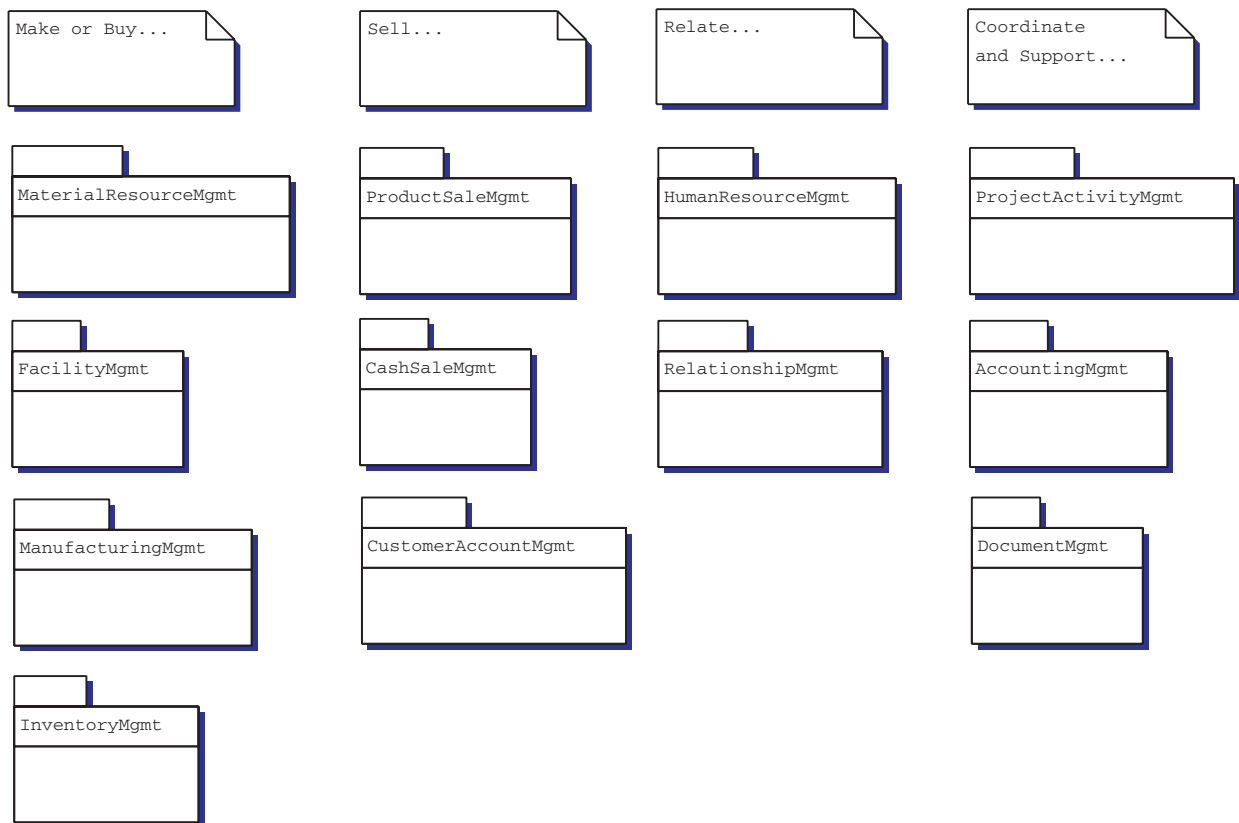


FIGURE 1-26. ▲ The twelve compound components.

1.9 SUGGESTED READING PATHS

You might choose to read this book in any number of ways.

If you are interested in a *sampling of interesting compound components*, read the first major section of each chapter (that is to say, 2.1, 3.1, 4.1, and 5.1).

If you are interested in a *top-down understanding of the components*, begin with project-activity management and then move to its subordinates: material-resource management, facility management, manufacturing management, inventory management, and human-resource management. Then scan the others.

If you are interested in *learning specific modeling tips*, begin by scanning the modeling-tips appendix. Then carefully study Chapter 2. Finally, scan Chapters 3–5 for additional tips. (We present each tip right after we’ve shown its application by example. Once we present a tip, we do not repeat it in subsequent material. So Chapter 2 has the most tips.)

If you are interested in *the domain-neutral component and its steady application across 61 components*, copy the domain-neutral component with four colors of Post-it Notes and then study the class-diagram shapes in Chapters 2–5, looking at what’s the same and what’s different, observing the little things along the way.

If you are interested in *templates, plans, and plan executions*, study the sections on manufacturing management and then activity management.

If you are interested in *material resources that eventually become products* and how the two interrelate and interact, read the sections on material-resource management, then product-sale management, and then inventory management.

If you are interested in *system and device interaction*, read the sections on manufacturing management (especially the section on device interaction) and accounting management (the part within accounting payment, dealing with authorization-system interaction).

If you are interested in the *development process*, read Chapter 1, scan Chapters 1–5, and then study Chapter 6.

1.10 SUMMARY

This chapter introduced enterprise-component modeling using color.

In practice, we have developed enterprise-model components and a process for building, applying, and adapting those components. Along the way, we’ve discovered that encoding added layers of information (roles, moment-intervals, things, and descriptions) was an essential ingredient for both building and reading component models; we found that color was especially suitable for adding these layers of information.

Component modeling with color is so effective that we expect that we will never again return to the monotonous flatland of monochrome modeling.

So get a set of four-color Post-it Notes and try this out for yourself. Take an existing model you are working on—or start with a new one, if you wish. Add “stickers” for the pink moment-intervals; the yellow roles;

the green parties, places, or things; and blue descriptions. Then stand back and check it out. Discuss it with a colleague. Walk through it with a domain expert.

Or, if you already have a large model, get a set of color highlighting pens (pink, yellow, green, and blue) and highlight the class names in your model. This is another good way to get started.

REFERENCES

Color and Visualization

- [Chijiwa87] Chijiwa, Hideaki, *Color Harmony*. Cincinnati: Rockport Publishers, 1987.
- [Gardner83] Gardner, Howard, *Frames of Mind: The Theory of Multiple Intelligences*. New York: Basic Books, 1983.
- The Elements of Color*. New York: Van Nostrand Reinhold, 1970.
- [Root-Bernstein85] Root-Bernstein, Robert Scott, "Visual Thinking: The Art of Imagining Reality." *Transactions of the American Philosophical Society*, Volume 75, 1985.
- [Tufte90] Tufte, Edward R., *Envisioning Information*. Cheshire, CT: Graphics Press, 1990.
- Walker, Morton, *The Power of Color*. Garden City Park, NY: Avery, 1991.
- [Wilcox94] Wilcox, Michael, *Blue and Yellow Don't Make Green*, Revised Edition. Cincinnati: North Light Books, 1994.

Modeling

- Booch, Grady, with James Rumbaugh and Ivar Jacobson, *UML User Guide*. Reading, MA: Addison Wesley, 1999.
- [Coad97a] Coad, Peter, "Boundary; Colors; Timeline; Status." *The Coad Letter*. Object International (www.oi.com), September 30, 1997.
- [Coad97b] Coad, Peter, "How to Build Better Object Models." Tutorial. OOPSLA, Atlanta, October 1997.
- [Coad92] Coad, Peter, and Mayfield, Mark, "Object-Oriented Patterns." *Communications of the ACM*. September 1992.
- [Coad95-97] Coad, Peter with Mark Mayfield and David North, *Object Models: Strategies, Patterns, and Applications*. Second Edition. Upper Saddle River, NJ: Prentice Hall, 1997.
- Curran, Thomas, and Gerhard Keller with Andrew Ladd, *SAP R/3 Business Blueprint*. Upper Saddle River, NJ: Prentice Hall, 1998.
- Fowler, Martin, *Analysis Patterns*. Reading, MA: Addison Wesley, 1996.
- Fowler, Martin, with Kendall Scott, *UML Distilled*. Reading, MA: Addison Wesley, 1997.
- Gamma, Erich, Richard Helm, Ralph Johnson, and John Vlissides, *Design Patterns*. Reading, MA: Addison Wesley, 1995.
- [Hayakawa68] Hayakawa, S.I., Editor, *Use the Right Word*. Now published under the title *Choose the Right Word*. Pleasantville, NY: Reader's Digest, 1968.
- [Webster78] *Webster's New Twentieth Century Dictionary*. New York: Collins World, 1978.